

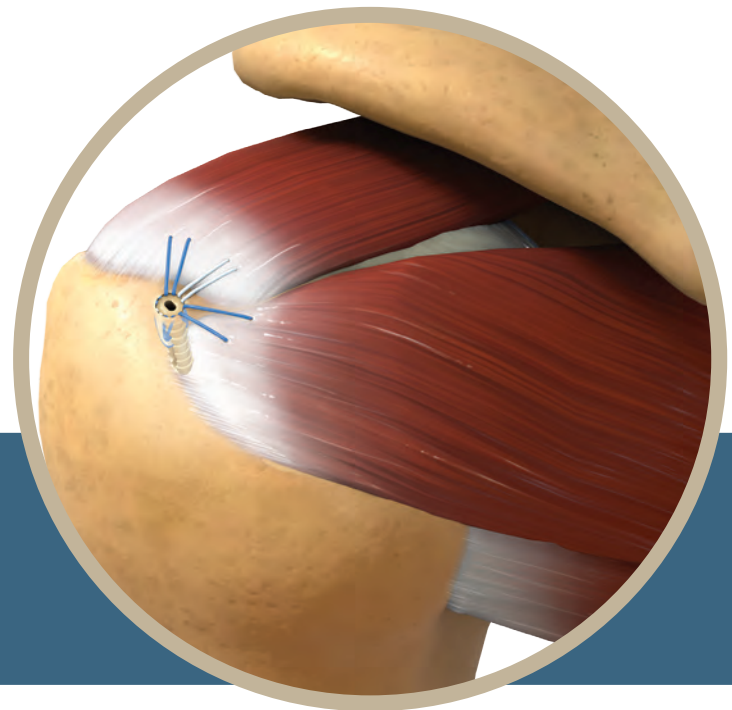
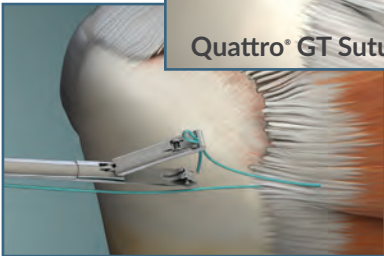
Quattro[®] Shoulder System

Innovative Rotator Cuff Solutions

Surgical Techniques

Quattro[®] Link Knotless Anchor
Inverted Mattress Stitch Technique

Quattro[®] X Suture Anchor
Simple Stitch Technique



Quattro[®]
Shoulder System

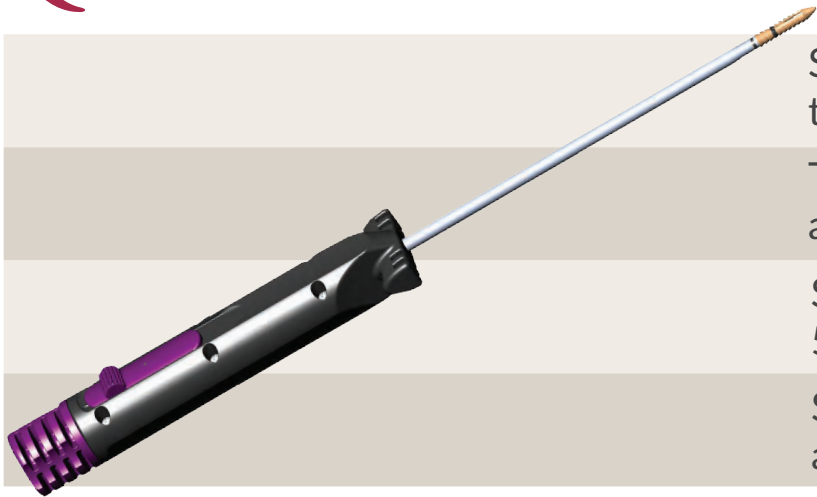


cayennemedical.com | 1-888-229-3661

Quattro[®] Shoulder System

Innovative Rotator Cuff Solutions

Quattro[®] Link Knotless Anchor



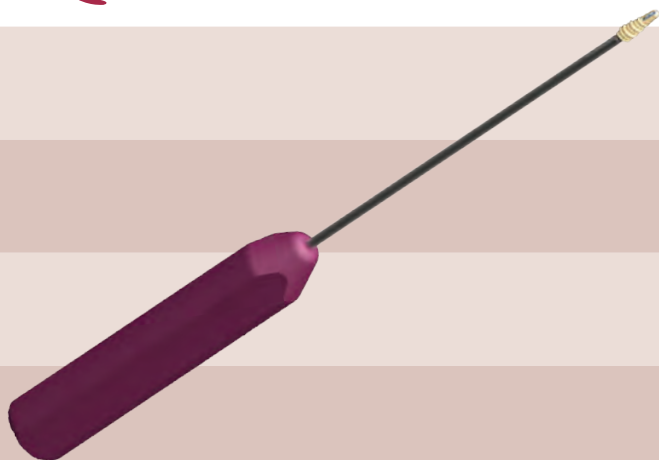
Surgeon - controlled
tensioning after insertion

The **only** anchor cleared to
accept 8 suture limbs

Strong reliable repair with
519N pull out strength*

Superior ease of use for all repairs
and various techniques

Quattro[®] X Suture Anchor



Unique drop-in anchor tip
allowing for effortless insertion

Superior Force Fiber[®] suture
strength and easy suture sliding

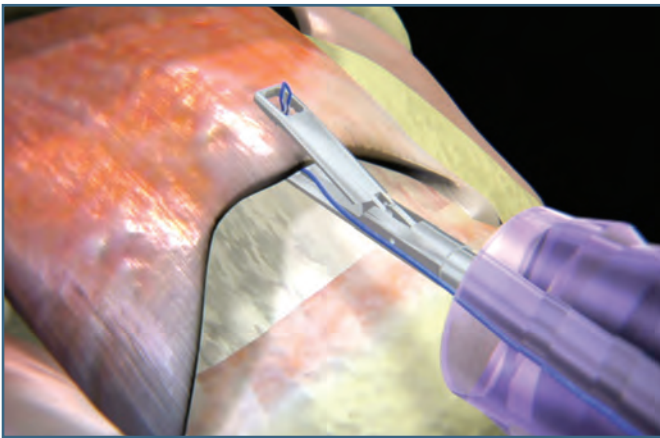
Bio-Inert, radiolucent
PEEK-OPTIMA[®] material

Tapered thread design delivers optimal
purchase to bone - 447N pull out strength*

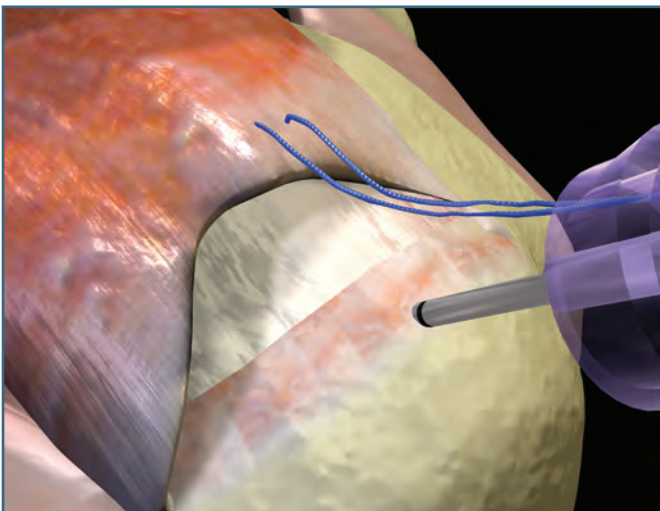
Quattro® Link Knotless Anchor Rotator Cuff Repair Single Row/Inverted Mattress Stitch

The Cayenne Medical, Inc. Quattro® Link Knotless Anchors are intended for use for the reattachment of soft tissue to bone for various procedures throughout the body. It has a unique eyelet design that allows independent tensioning of each suture strand based on the characteristics of the rotator cuff tear. The eyelet cleat feature allows tension to be set, held, reversed (if necessary), and maintained during anchor deployment.

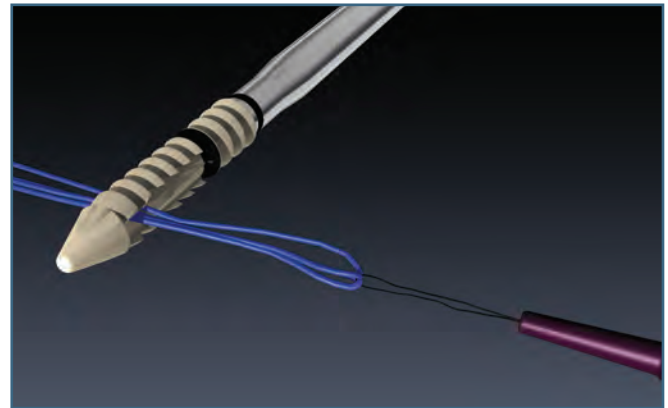
- 1 Using the Quattro® suture passer, pass the desired stitches of #2 Force Fiber™ (UHMWPE) high strength suture through the rotator cuff based on the tear location. Retrieve the suture limbs to be loaded into the anchor out of the same cannula.



- 2 Create a pilot hole for the anchor by lightly malleting the strike plate on the awl. Advance the awl until the distal edge of the marker band is flush with the bone.

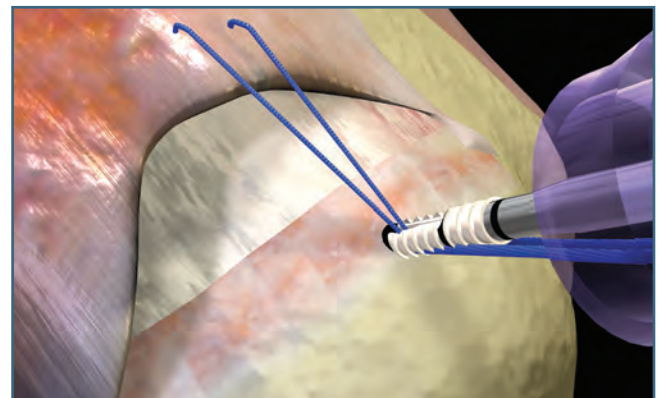


- 3 Place the suture limbs through the suture snare. Pull the snare handle to load the suture limbs through the eyelet of the anchor.

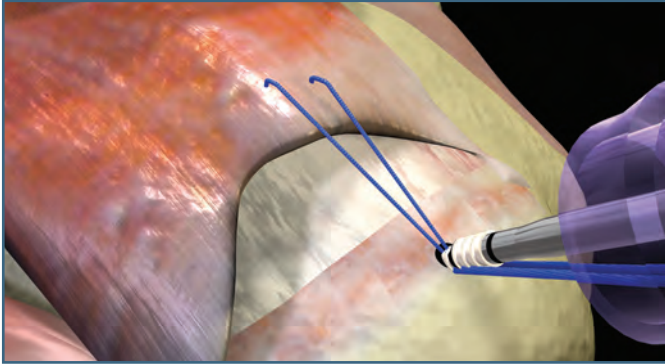


Note: Quattro® Link is cleared to accept up to 8 suture limbs.

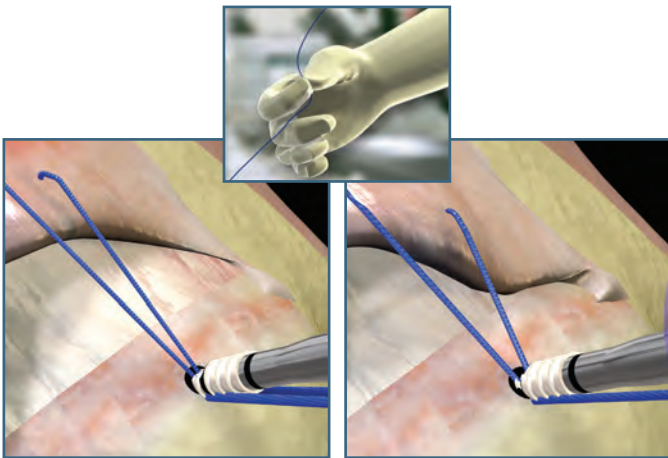
- 4 Hold light tension on the suture strands outside of the joint space and advance the anchor through the cannula. Once the anchor is through the cannula, release the tension on the suture strands. The suture strands coming from the tissue should feed directly into the anchor eyelet (not behind or twisted around the anchor). Place the tip of the anchor into the pilot hole.



- 5 Mallet the inserter handle to advance the anchor to the distal edge of the 1st Marker Band on the anchor. **DO NOT** mallet past the 1st horizontal marker band. Proper anchor insertion depth will allow for proper suture tensioning.



- 6 While applying forward pressure against the anchor, individually tension each suture strand and release. The Quattro® Link Knotless Anchor is uniquely designed to maintain tension without having to manually hold each suture limb.

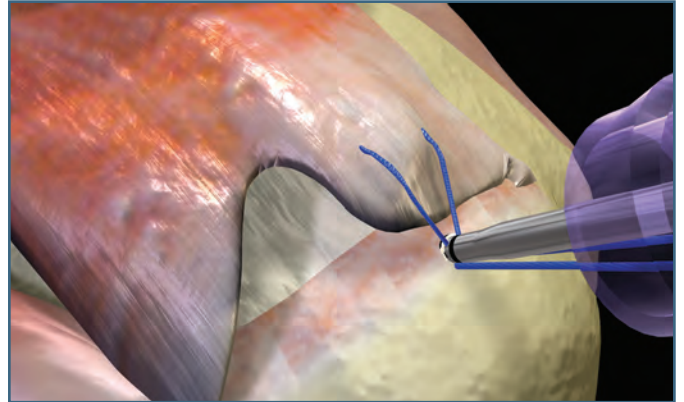


Note: If the surgeon feels the suture is over tensioned, tension may be released by using an arthroscopic probe to loosen the suture tension and re-tension.

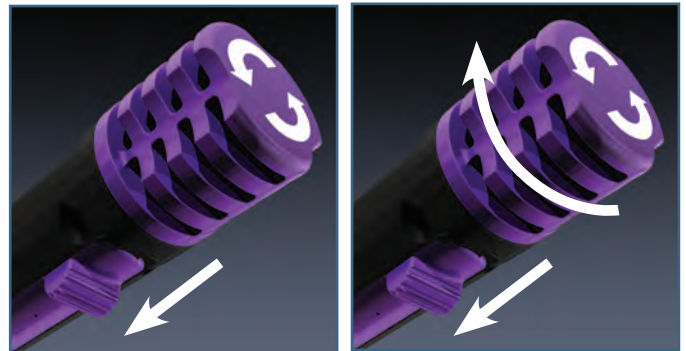
- 7 Rotate the purple Post Tension Knob clockwise on the inserter handle until it stops.



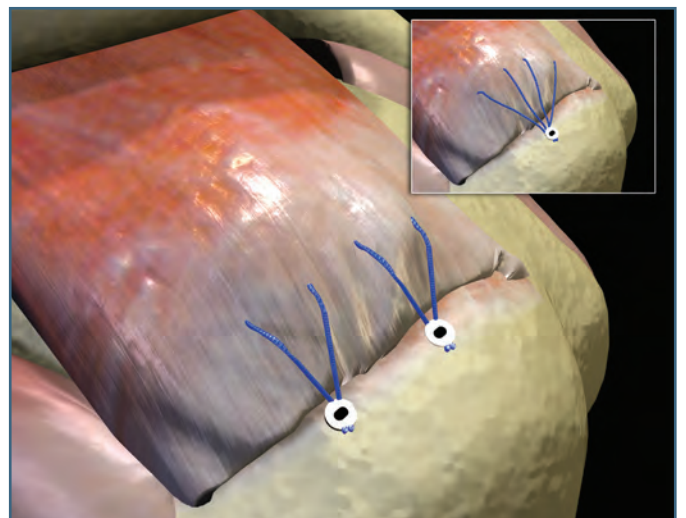
- 8 Mallet the inserter handle until the distal edge of the 2nd Marker Band on the inserter shaft is flush with the bone.



- 9 Push and hold down the Anchor Release Slide and rotate the Post Tension Knob clockwise until the inserter releases from the anchor. Discard inserter.



- 10 Cut the suture strands with the Quattro® Suture Cutter.

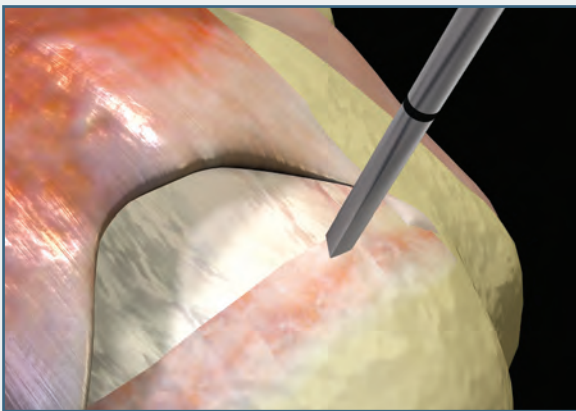


Refer to the product Instructions For Use (IFU) insert for a list of contraindications, warnings, and precautions.

Quattro® X Suture Anchor Rotator Cuff Repair Single Row/Simple Stitch

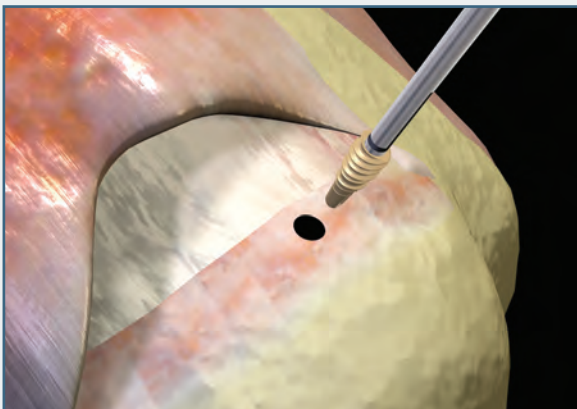
The Cayenne Medical, Inc. Quattro® X Suture Anchors are intended for use for the reattachment of soft tissue to bone in Rotator Cuff Repairs. The anchor is pre-loaded with two strands of #2 Force Fiber® (UHMWPE) high strength suture (colors: solid blue/blue co-braid). A progressive tapered dual thread allows for increased engagement with the cortex.

- 1 Place the Quattro® X awl through a lateral accessory portal at a 45° "deadman" angle. This angle is recommended for proper anchor insertion and fixation. Mallet until the distal edge of the 1st Marker Band is flush with the bone for a 5.5mm anchor and the 2nd marker band for a 6.5mm anchor.

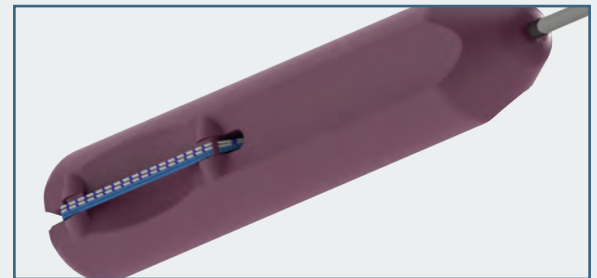


Note: Taps for the 5.5mm & 6.5mm anchor are available and recommended to be used in hard bone.

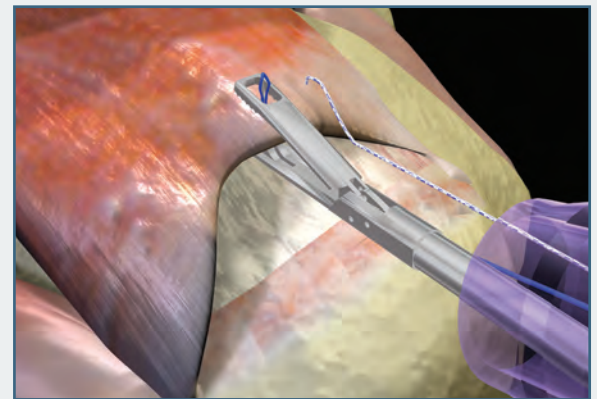
- 2 Insert the Quattro® X Anchor through the same portal as the awl at the same 45° angle. Screw in the anchor until the horizontal marker band is flush with the bone. Make sure that the vertical marker band is facing or adjacent to the tissue edge. The vertical marker band indicates the suture orientation.



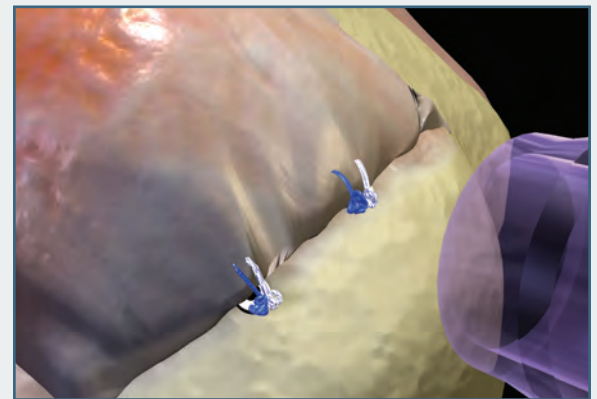
- 3 Pull the suture limbs completely out of the driver handle and release from cleat. Pull the driver handle axially to disengage the inserter shaft from the anchor.



- 4 Pass the suture through the tissue.



- 5 Tie knots with an arthroscopic knot pusher and cut suture.





Quattro® Link



Quattro® Link SP



Quattro® X/X3

Quattro® Link Knotless Anchors (Sterile)

CM-9129	Quattro® Link Knotless Anchor 2.9mm
CM-9145	Quattro® Link Knotless Anchor 4.5mm
CM-9145SP	Quattro® Link SP Knotless Anchor 4.5mm, Metal Tip
CM-9155	Quattro® Link Knotless Anchor 5.5mm

Quattro® X Suture Anchors (Sterile)

CM-9255	Quattro® X Suture Anchor, 5.5mm pre-loaded with (2) Size 2 Force Fiber® Sutures
CM-9255X3	Quattro® X3 Suture Anchor, 5.5mm pre-loaded with (3) Size 2 Force Fiber® Sutures
CM-9265	Quattro® X Suture Anchor, 6.5mm pre-loaded with (2) Size 2 Force Fiber® Sutures

Quattro® Instruments

CM-9010GT	Quattro® GT Suture Passer with grasping top jaw
CM-9010	Quattro® Suture Passer
CM-9010LS	Lock-Stitch™ Suture Passer
CM-9100	Awl - for 4.5mm & 5.5mm Quattro® Link Knotless Anchor
CM-9200	Awl - for 5.5mm & 6.5mm Quattro® X Suture Anchor
CM-9201	Tap - for 5.5mm Quattro® X Suture Anchor
CM-9202	Tap - for 6.5mm Quattro® X Suture Anchor
CM-9203	Tap - for 5.5mm Quattro® X3 Suture Anchor

Quattro® Accessories (Sterile)

CM-0201	TRU-LINK™ blue braid (nonabsorbable) Size 2 suture
CM-0202	TRU-LINK™ white/blue co-braid (nonabsorbable) Size 2 suture
CM-0205N	TRU-LINK™ w/Needle white/blue co-braid (nonabsorbable) Size 2 suture
CM-0206N	TRU-LINK™ w/Needle white/black co-braid (nonabsorbable) Size 2 suture
CM-9011	Suture Passer Needle

